

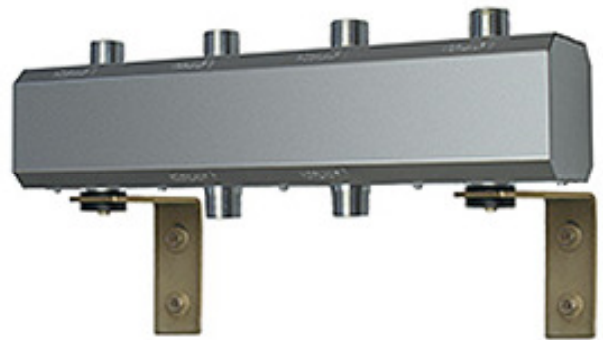
DISTRIBUTOR BLOCK

Distributor Block for Pump Units

Product Number : HF 1000/1001

The hydraulic distributor allows you to work the primary circuit and secondary circuit independently.

	HV60/125-2	HV60/125-3
Product number	HF1000	HF1001
No. of pump connections	2	3
Length [mm]	508	758
Connection to pumps	1 " M	
Connection to pumps	centre distance 125mm	
Connection to LLH/switcher	1 " M	
Connection to pumps	centre distance 125mm	
Power [up to]	50Kw	
Rise in temperature in circuit	$\Delta T=20$ K	
Flow rate [up to]	2m ³ /h	
Max. Flow rate [up to]	6 bar	



DISTRIBUTOR ACCESSORIES

Distributor Wall Brackets

Product Number : HF1005

Pair of brackets to fix distribution header to the wall with the insulation box.

LLH/Distributor Connectors

Product Number : HF2001

[1"F-1"F] [x2]

Low Loss Header

Product Number : HF1100/HF1101

